

# INTRODUCING PRECISE POLICING FOR TECH UK

Adam Boyse  
August 2025

# Agenda

Allocated Time	Item	Content	Lead
5 mins	Introductions	Introductions	All
10 mins	Context / Purpose	<ul style="list-style-type: none"><li>• Strategic Intent of Precise Policing Programme</li><li>• Outline current challenges and summary of requirements:</li></ul>	Adam Boyse
25 mins	Scope	<ul style="list-style-type: none"><li>• Data intelligence</li><li>• Situational Awareness</li><li>• Digital Evidence Management</li><li>• Digital Workflow (longer term)</li></ul>	Adam Boyse Kathryn Dagnall
15 mins	Procurement	<ul style="list-style-type: none"><li>• Route to market</li><li>• Indicative Timescale</li><li>• Engagement</li><li>• Next steps</li></ul>	Peter Thurley
5 mins	Q and A	<ul style="list-style-type: none"><li>• Suppliers</li></ul>	All

# Precise Policing.... What is it?

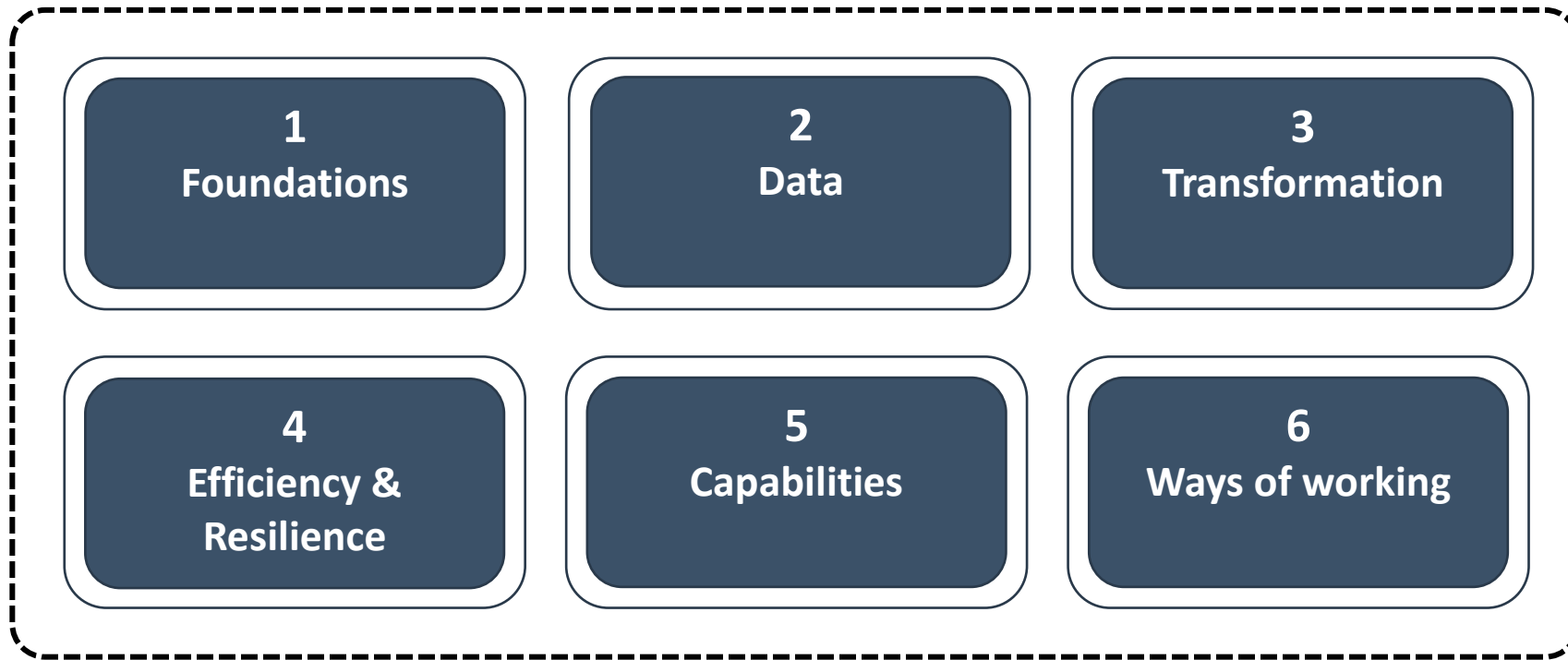
Accelerating how we deliver technology and data products to frontline officers.

Bringing together a new delivery model, new procurement framework, new ways of working and rapid prototyping to work on a series of prioritised initiatives.

Supporting our mission under A New Met for London to build **More Trust, Less Crime, and Higher Standards.**

# Precise Policing.... Alignment to the Digital Strategy

To deliver precision-led Policing, to meet operational needs and to support the transformative change programmes, our DDaT strategy is structured around 6 strategic themes. These act as guides allowing us to plan an approach to select, deploy and run digital technology that works for the Met.



# DDaT strategy themes

Foundations	Data	Transformation
<p>The guardrails within which we operate. Includes supporting principles, strategies, data assurance, blueprints and processes.</p>	<p>Data underpins almost everything that we do at the Met. Implementing our DDaT strategy starts by developing our enterprise data platform to curate data from multiple operational data sources, supporting business insight and effective decisions</p>	<p>The Met has an ambitious timetable for transformational change aligned to the New Met for London priorities. DDaT will support and enable these transformation activities by aligning the DDaT projects, products, platforms and resources to the needs of each transformation programme</p>
Efficiency & Resilience	Capabilities	Ways of working
<p>We need to be efficient in how we operate, how we deliver and how we avoid accruing additional risk and technology debt</p>	<p>We cannot deliver any of these strategic themes without our people. Our strategy is to ensure that our teams have the tools and capabilities to keep pace with the rate of change – both within the Met and across the technology industry</p>	<p>We will continuously look at how we communicate and collaborate internally, with other forces and with suppliers. Continually assessing how we operate, learning and improving</p>

# Precise policing journey...

## 1. DEFINE and DESIGN

- Set our aspiration for precision in key areas of our business
- Identify phase 1 opportunities
- Establish operating model and team

Under pinned by:

- Business strategy
- DDaT Strategy
- Data quality and assurance
- Data Strategy
- Cyber Strategy

## 2. Phase 1 delivery Underway now

Delivery of...

- Electronic statements
- Translation
- Copilot

Identify potential Phase 2 priorities

Under pinned by:

- Business capabilities
- DDaT capabilities
- Data and architecture
- Technology blueprints
- Available products and Platforms

## 3. Phase 2 delivery Where you can get involved

Delivery of the next priorities

**Examples, subject to governance:**

- Situational awareness
- Mapping and Geo-spatial
- Digital Evidence Management
- Data intelligence
- Digital workflow

## 4. SCALE and continue

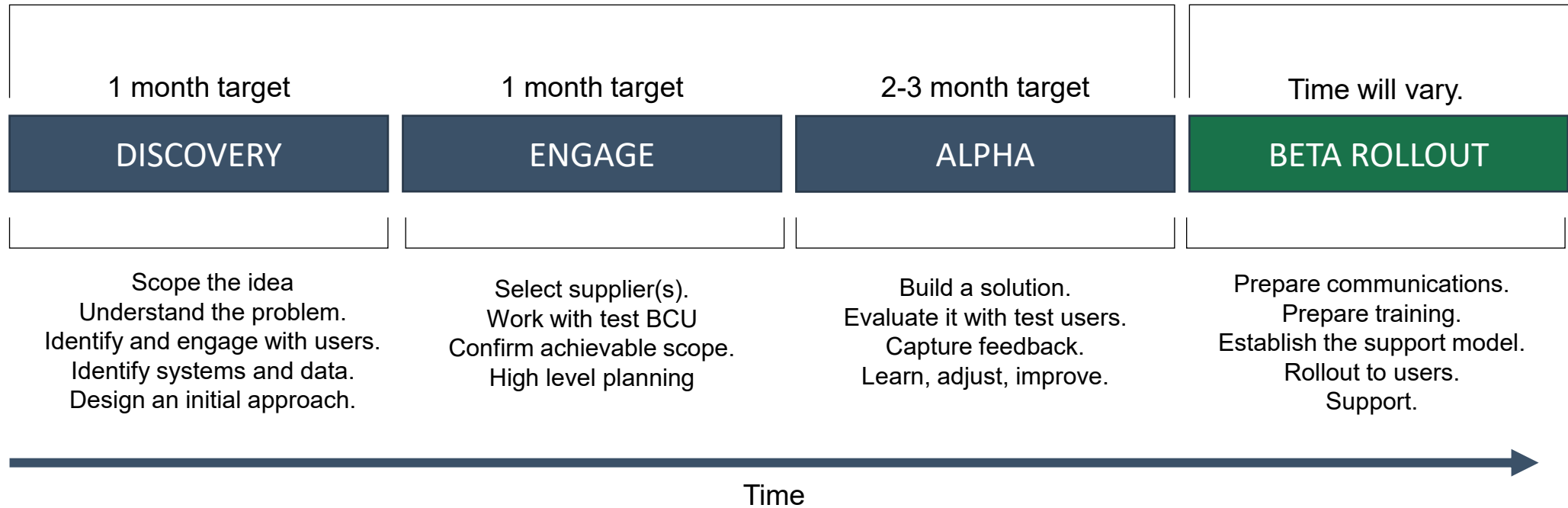
- Take forward and scale
- Phase 3 roadmaps and plans
- Delivery
- Gain actionable insights from data
- Assess, learn, enhance

Other example initiatives:

Video analysis  
Case management  
Vehicle technology  
Public engagement

# The timeline for delivering each idea...

Break up large problems into achievable short bursts of valuable activity, each within a target timeboxed timescale



# Ensuring the safe and successful delivery of solutions

Suppliers bear increased responsibility with initial testing earlier in the delivery process

Initial testing evaluation the supplier is required to provide to ensure suitability for the project prior to the engagement

Earlier Evaluation

Comprehensive end-to-end and system integration testing should be incorporated.

End-to-end

Products are required to demonstrate their capability to scale effectively, meeting the Met's established standards for user capacity and data volume.

Scalability

Automated

Suppliers are required to develop a comprehensive set of automated tests for any solutions specifically designed for the MPS.

Manual testing is recommended only during the Alpha user testing phase and should otherwise be avoided.

Deployment processes should be fully automated using Terraform and Azure DevOps

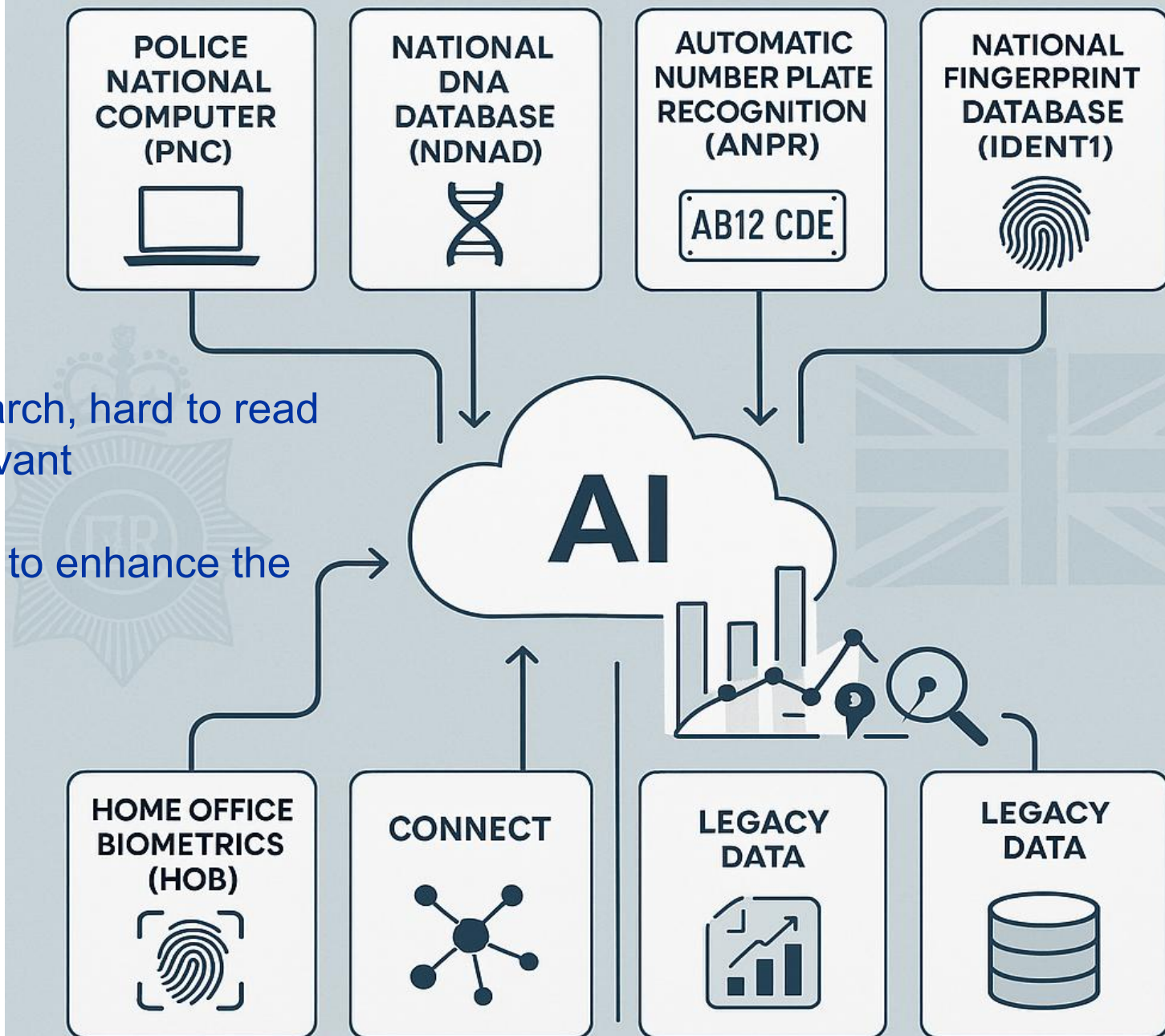


# Data Intelligence

The value of AI analytical engines

We have lots of data, but it is hard to search, hard to read across, and hard to determine if still relevant

Can we use the latest analytical engines to enhance the value of our data?



# Situational Awareness

*Time-critical assessments of people and locations for our response officers*

Our call-handlers and dispatchers are under pressure to answer the next queued call

We want to respond to calls with the right number of officers by providing data-led risk assessments or summaries of the situation

We want to know all about the people involved before we arrive so we never miss a wanted offender, or provide safeguarding to vulnerable residents

Can we bring together our legacy data, national data, custody images and provide it fast-time?

Can this data inform proactivity – where to patrol, who to look out for?



# Digital Evidence Management

*Ingest, analyse, assess, edit/redact, share...*

The and video evidence, but also faces the challenge of obtMPS has lots of CCTV aining and ingesting it from victims and witnesses whose expectations are increasing

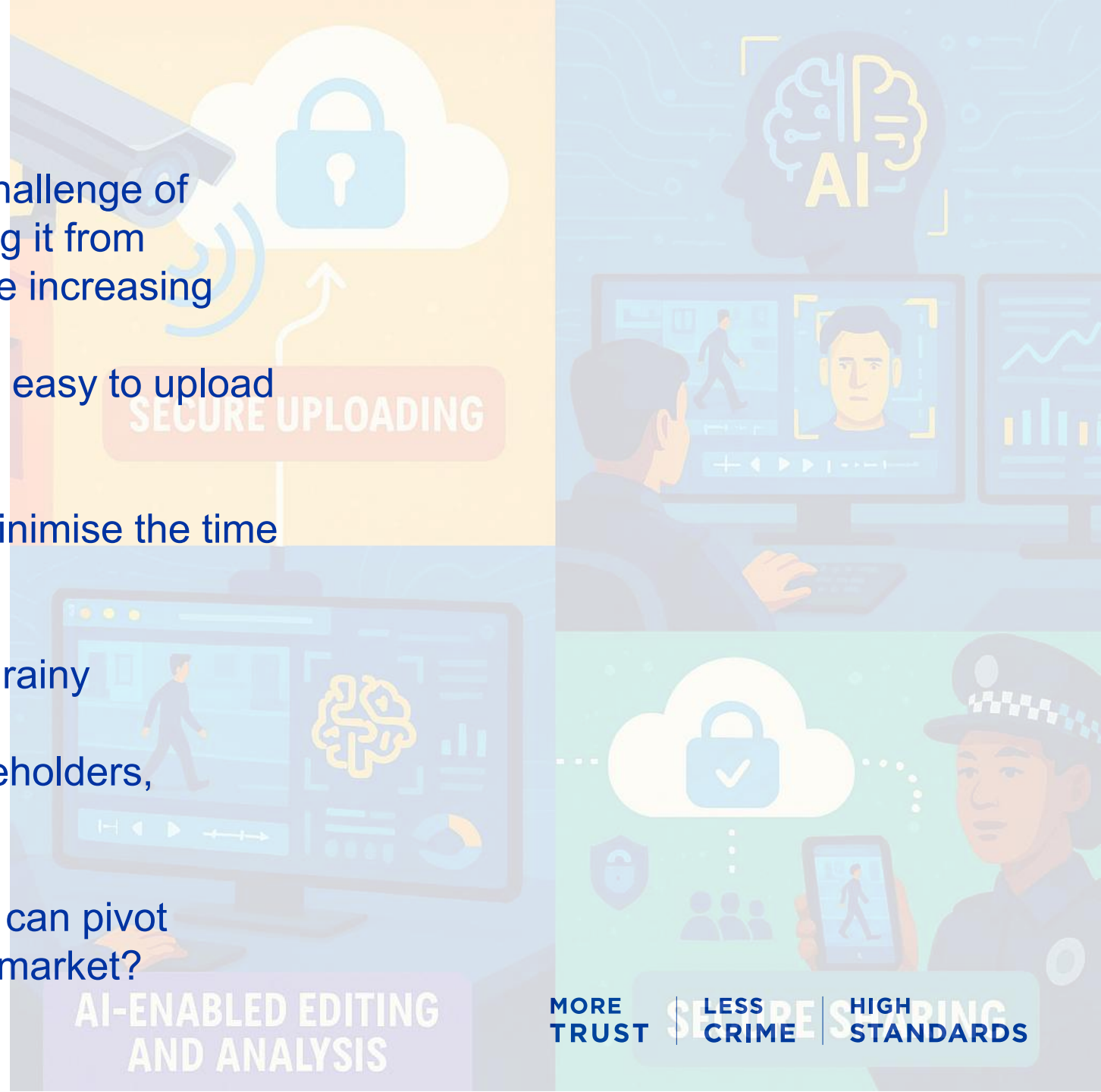
We want to make it easy to obtain by officers, easy to upload for victims

We need to analyse it, edit it, redact it, and minimise the time in doing so

We also want to enhance it when footage is grainy

We must also share it with the CPS and stakeholders, preserving its evidential integrity

What new technologies can help us with this, can pivot quickly as new types of footage come on the market?





# Digital Workflow

*Single front end, smartphone-focused*

The MPS has consolidated its legacy solutions into fewer wider platforms

We are interested in exploring modern front ends that sit across Connect, our most frequently-used forms and perhaps other Apps.

Some constabularies have this type of capability.

# Procurement Approach

The following is an indicative procurement timeline. The timetable provides an indication of when we are aiming to undertake procurement activities however, it is subject to change.

Stage	Indicative Completion Date
Early market engagement and establish conditions of the Dynamic Market	August 2025
1. Issue of Dynamic Market Notice Pre procurement Notices	August 2025
2. Prepare Tender Notice and Request to Participate	August 2025
3. Publish Tender Notice and tender documents	August 2025
4. Request to Participation 30 days	September 2025
5. Assess Requests to participate and admit suppliers meet criteria	September 2025
6. Award places on the Dynamic Market and commence Competitive Flexible Procedures for requirements from November 2025	November 2025