

IMechE and Data Centres Knowledge Exchange:

Addressing engineering challenges in critical environments

<https://www.workcast.com/register?cpak=3543333841177594>

Thank you for joining this event presented on Thursday 11th March 2021

We will commence promptly at 11:30 GMT

Please use "Ask a Question" button to submit your questions and we will endeavour to answer as many questions as possible at the end. You may contact the speaker to request the slides after the event.

Institution of
**MECHANICAL
ENGINEERS**

**Process
Industries
NW Centre**



www.techuk.org



Steve Wright
Chief Operating Officer
4D Data Centres



Emma Fryer
Associate Director
techUK



Mark Acton
Data Centre Consultant, Chartered
Engineer, Chartered IT Professional



Billy McHallum
Senior Manager
IBX Operations Engineering



Dave Smith
Director Sustainability and Operational Risk
Interxion: a Digital Realty Company



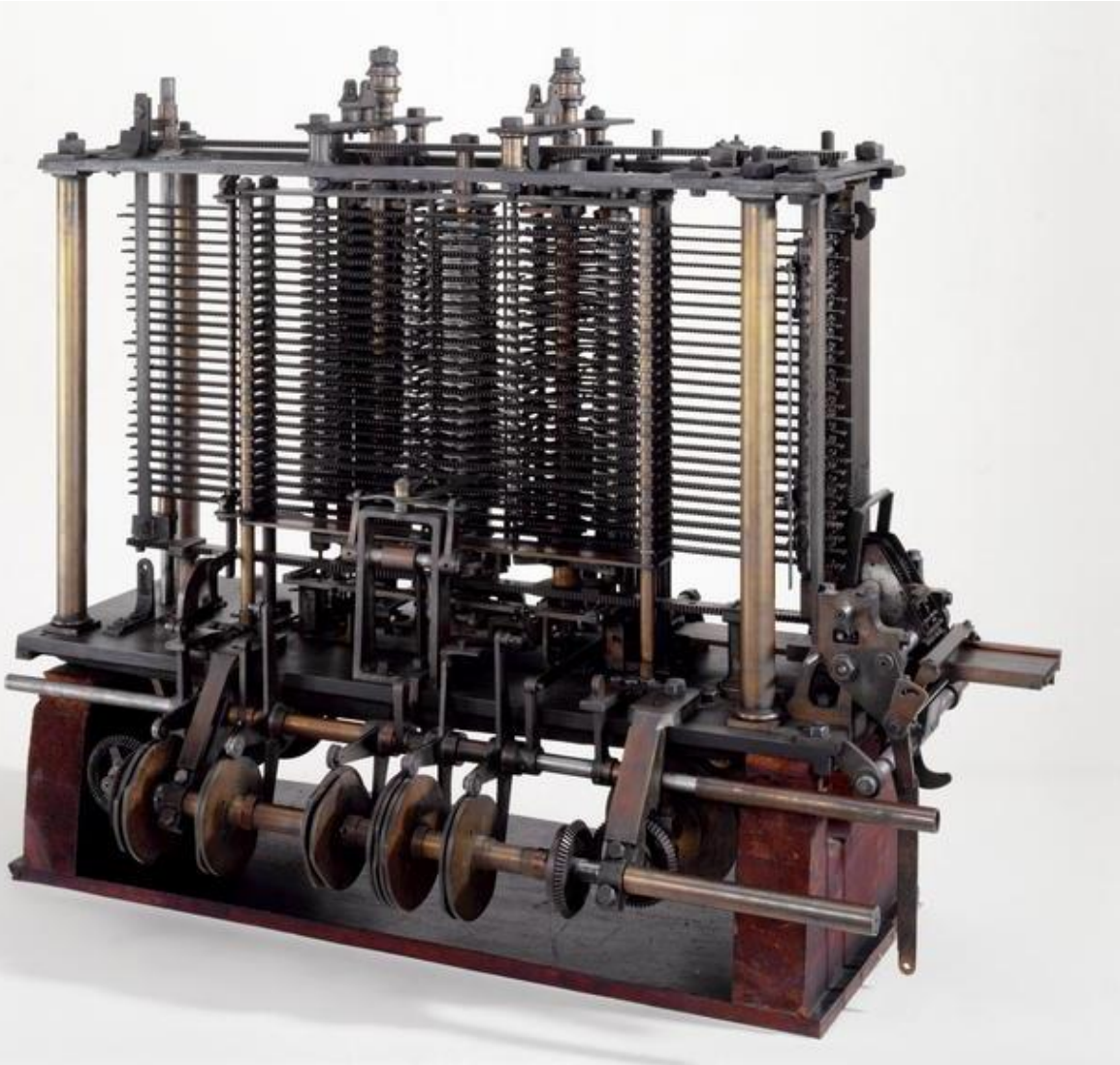
Murat Islam
Mechanical Engineer
John Crane UK Ltd

www.imeche.org/get-involved www.imeche.org/industry-sectors/process
www.linkedin.com/in/imeche-process/ www.linkedin.com/in/imeche-north-western/
nearyou.imeche.org/near-you/UK/North-Western twitter.com/IMechE_NWR

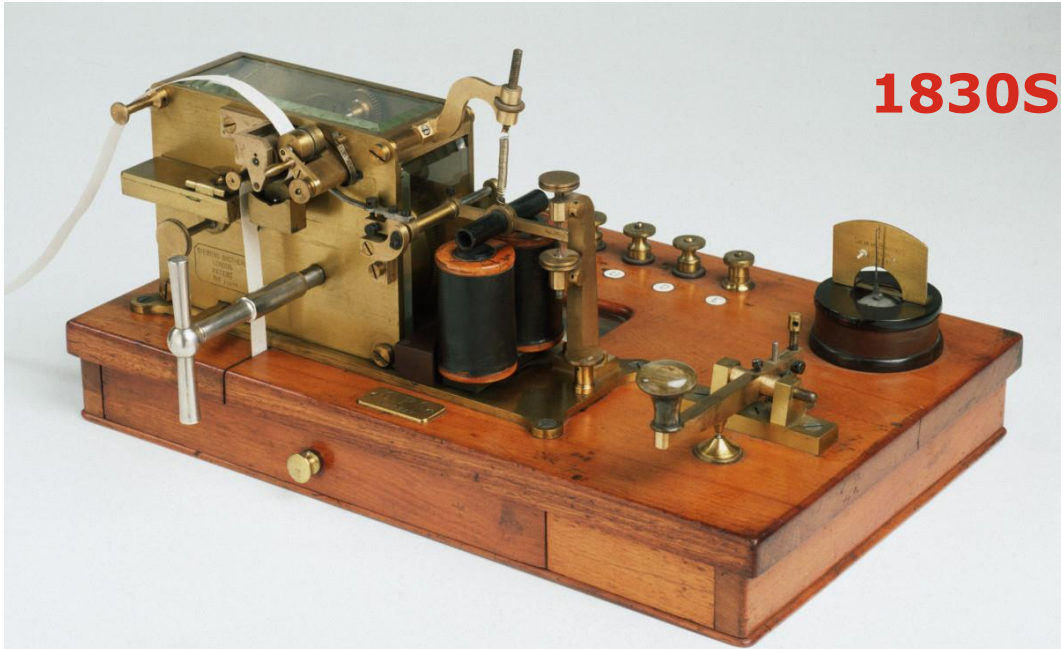
WHAT IS A DATA CENTRE?



DATA CENTRES ...BACKSTORY



1837



1830S

1	2	3	4	CH	UM	Jp	Ch	Ca	In	20	30	40	Dr	Ua	3	4	3	4	A	E	L	a	g	
5	6	7	8	CL	UL	0	Hu	Qd	Ho	25	35	45	Wd	OT	1	2	1	2	B	F	H	b	h	
1	2	3	4	CS	US	Mo	8	H	0	30	40	50	0	2	Mo	0	15	0	15	0	0	W	a	z
5	6	7	8	No	Hd	Wc	W	F	5	35	45	55	1	3	5z	5	10	5	10	D	H	0	d	z
1	2	3	4	Ph	FF	Pa	7	1	10	40	50	60	4	0	1	3	0	2	St	I	F	e	1	
5	6	7	8	Hh	HT	Ra	8	2	15	45	55	65	100	Ua	2	4	1	3	4	K	Ua	F	m	
1	2	3	4	2	Ua	Ph	9	3	5	e	X	R	L	E	A	6	0	US	Dr	So	US	Dr	So	
5	6	7	8	Oh	En	Mh	10	4	w	6	Y	8	H	F	8	10	1	Or	En	Ma	Or	En	Ma	
1	2	3	4	M	H	OK	11	5	1	e	S	T	H	G	C	15	2	Sw	PC	BC	Sw	PC	BC	
5	6	7	8	7	4	1	12	6	m	f	MO	U	O	E	D	Ua	3	Nv	So	Ku	Nv	So	Ku	
1	2	3	4	8	3	2	Co	O	n	g	e	V	P	I	Al	Ma	4	Dh	Pr	It	OK	Pr	It	
5	6	7	8	9	1	5	13	7	o	b	b	W	Q	X	Un	Pa	5	Eu	Ol	En	Ru	Ol	Un	

1889

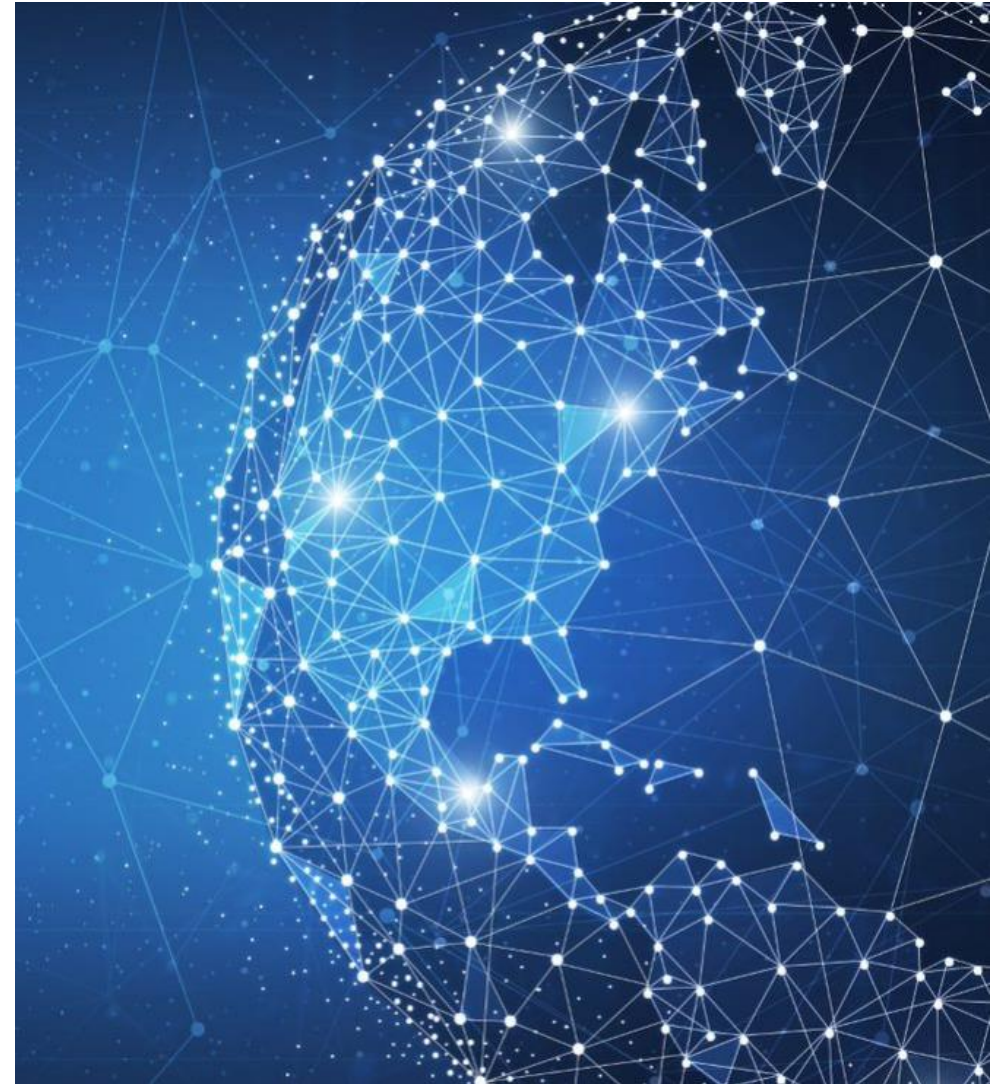
1900



1989



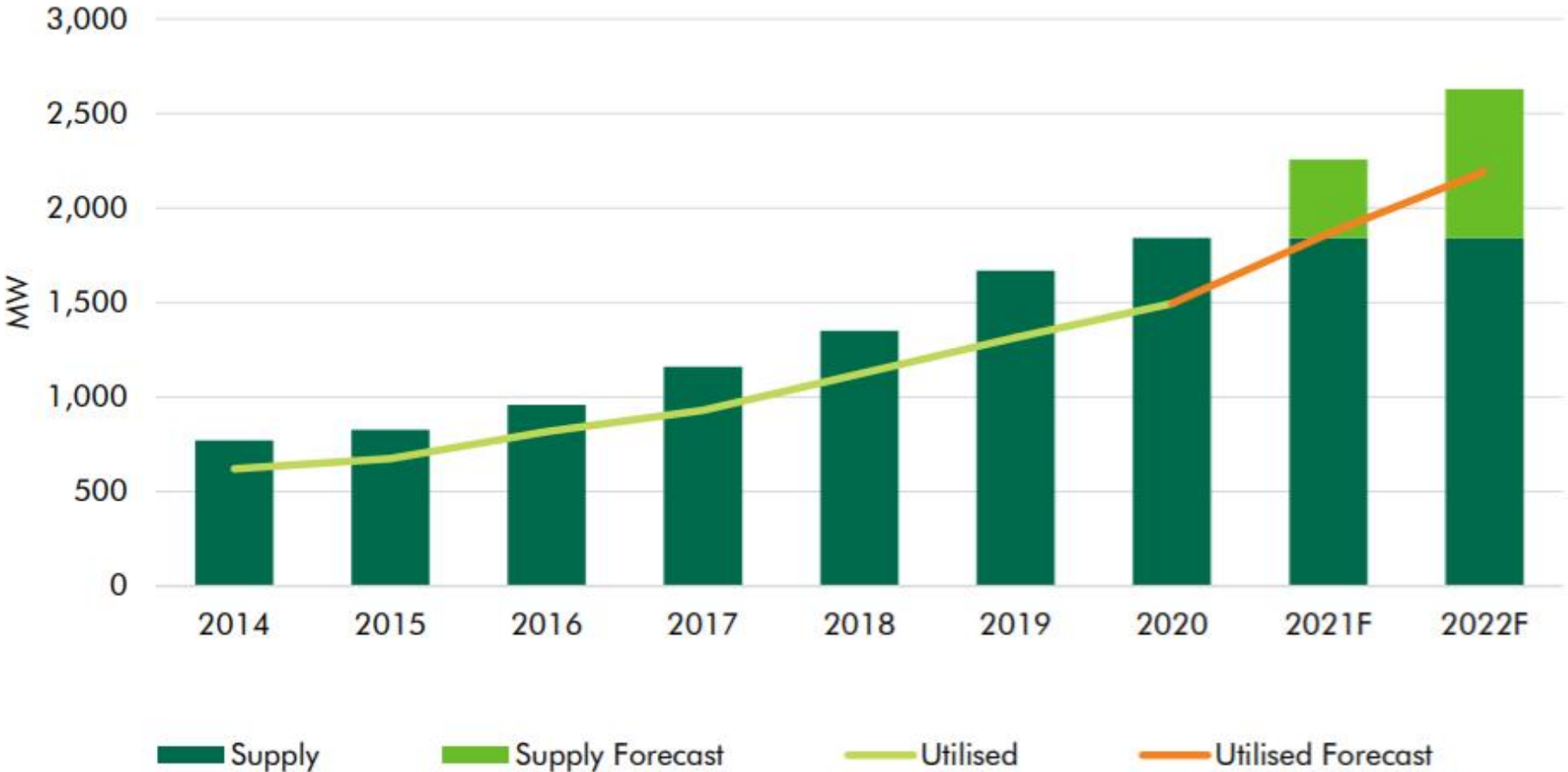
2020





SECTOR GROWTH: CBRE EUROPEAN STATS

Total market supply & utilisation



173 MW

New supply added



201 MW

Take-up

OPERATORS



EQUINIX



interxionTM
A DIGITAL REALTY COMPANY

infinity

GLOBAL
SWITCH



NTT

CyrusOne[®]



KEYSOURCE

IBM

ARK[®]
DATA CENTRES

iomart

Pulsant
Business Unlimited

rackspace[®]

vodafone

linx

VIRTUS
Data Centres

CloudHQ

aws

LUMEN[®]

TELEHOUSE

CBRE Future-tech

Google

OUR PANEL



Steve Wright
Chief Operating Officer
4D Data Centres



Mark Acton
Data Centre Consultant, Chartered
Engineer, Chartered IT Professional



Billy McHallum
Senior Manager
IBX Operations Engineering



Dave Smith
Director Sustainability and Operational Risk
Interxion: a Digital Realty Company



Murat Islam
Mechanical Engineer
John Crane UK Ltd

KEY COMPONENTS



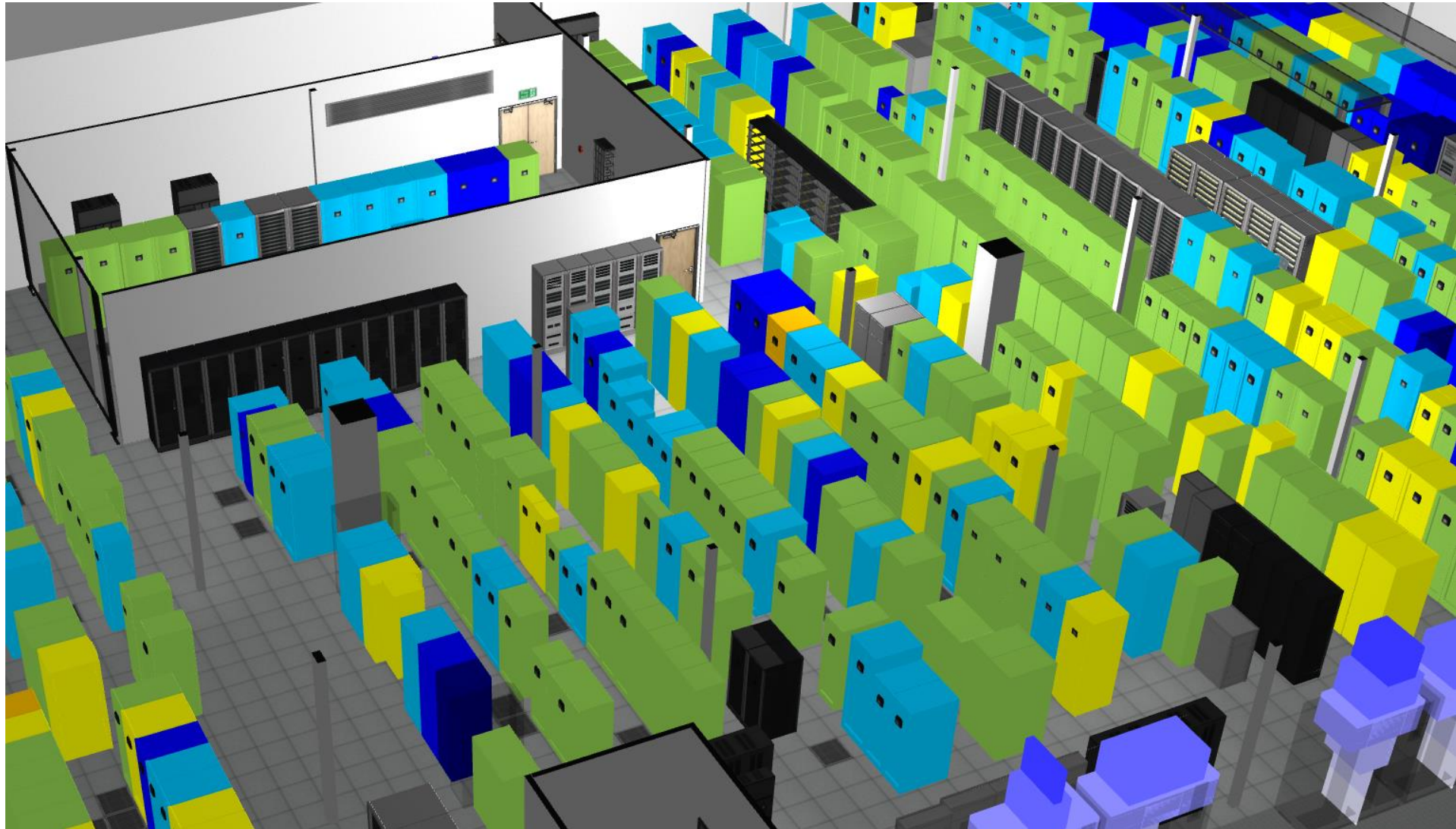
KEY COMPONENTS



KEY COMPONENTS



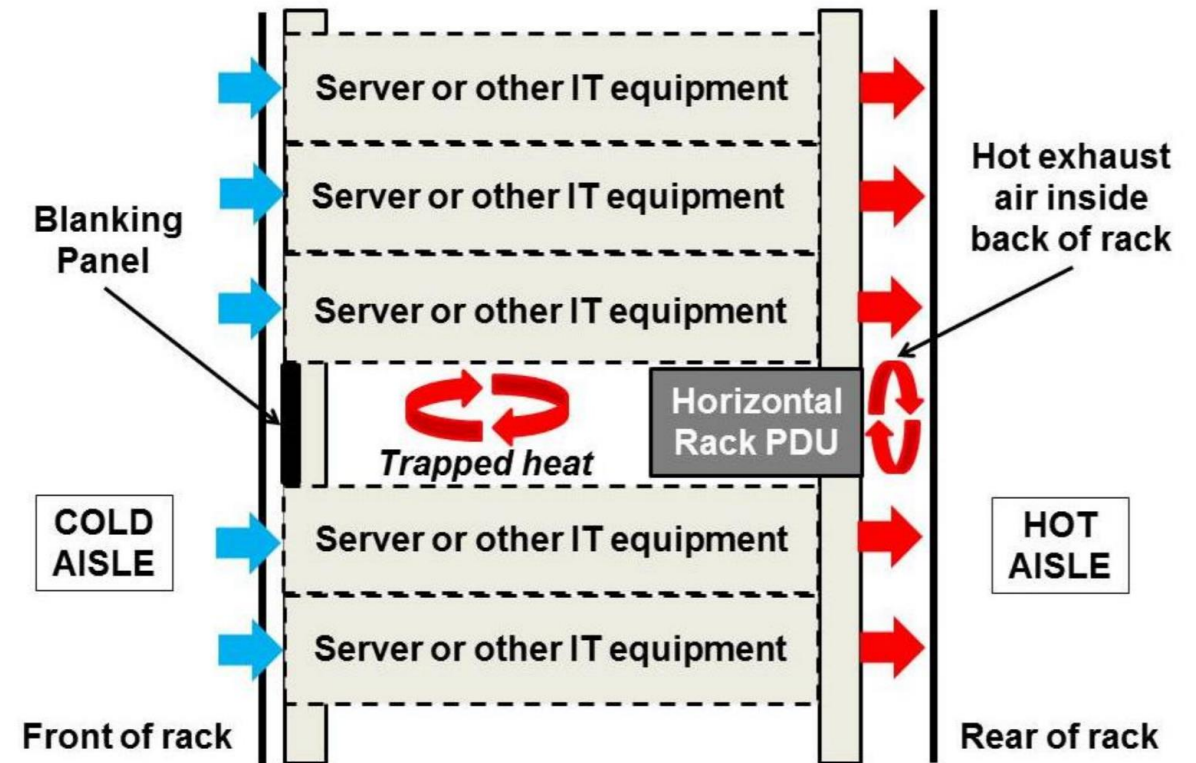
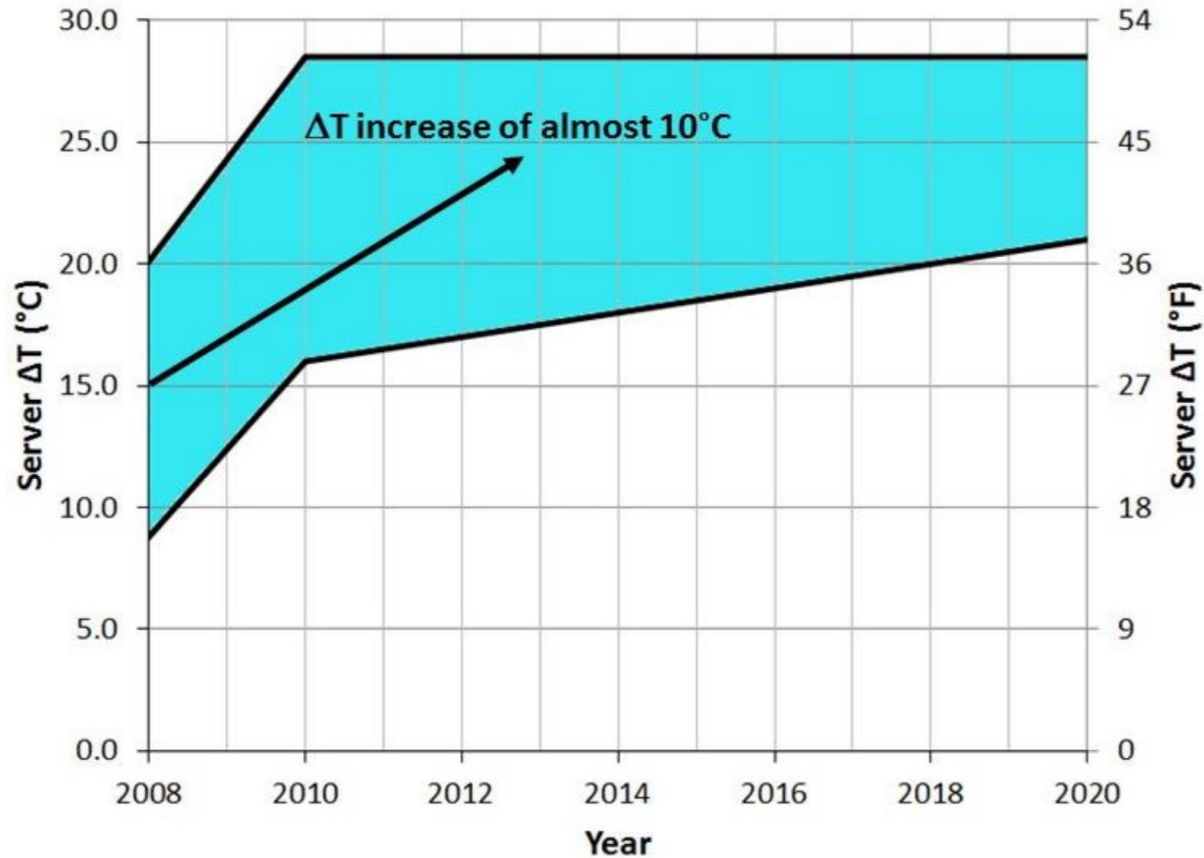
INNOVATIONS: EFFICIENCY



INNOVATIONS: IT EQUIPMENT

ASHRAE TC9.9

Increasing IT equipment inlet temperature



MULTIPLE DC STANDARDS EXIST



FURTHER INFORMATION AND LINKS

Careers landing page

[Data Centre Employers, Training Providers, Recruiters](#)

Sector overview

[The UK Data Centre Sector: The Most Important Industry You've Never Heard Of](#)

[Ten Myths About Data Centres](#)

Lots more information here

<https://www.techuk.org/data-centres-programme/data-centres-resource-index.html>

Contacts

Emma.fryer@techuk.org

www.techUK.org

Thank You

Thank you for your attention. We hope you enjoyed this event which was facilitated by Steven Wright, Emma Fryer, Murat Islam and Fiona Wong on behalf of Process Division NW Centre committee of the Institution of Mechanical Engineers.

Upcoming events:

- <https://www.imeche.org/events>
- <https://nearyou.imeche.org/near-you/UK/North-Western>

Connect with us:

- <https://www.linkedin.com/in/IMechE-North-Western>
- <https://www.linkedin.com/in/IMechE-Process>
- <https://www.imeche.org/webinar-hub>

www.imeche.org

**Institution of
MECHANICAL
ENGINEERS**

- ✓ become a member of the Institution of Mechanical Engineers
- ✓ learn more about how to become professionally registered
- ✓ present your work and get feedback from a select audience
- ✓ participate in STEM activities
- ✓ network with students, apprentices, engineers and managers
- ✓ promote your business or organisation
- ✓ enhance your professional standing
- ✓ showcase your commitment to continuing professional development
- ✓ contribute to the development of our engineering community
- ✓ be featured in our newsletters and social media channels

Improving the world through engineering