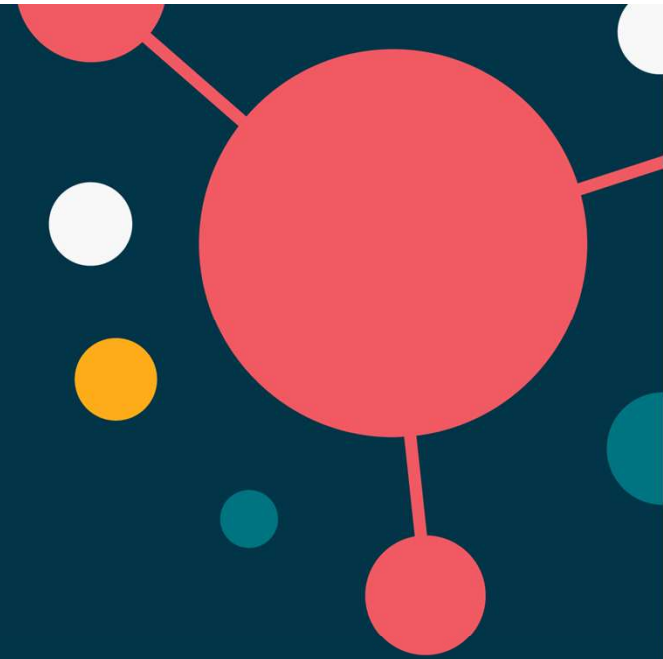




Exploring the role of the technology industry in Place

Data perspective.

July 2022



Who are xantura?



Adult health and social care

We help frail and elderly people live well for longer



Community safety

Helping to prevent re-offending and protect the most vulnerable from ASB



Housing and homelessness

We help at-risk people keep a roof over their heads



Children's services

We help prevent problems in childhood to create better lives for adults



xantura helps the public sector to improve outcomes for vulnerable people.

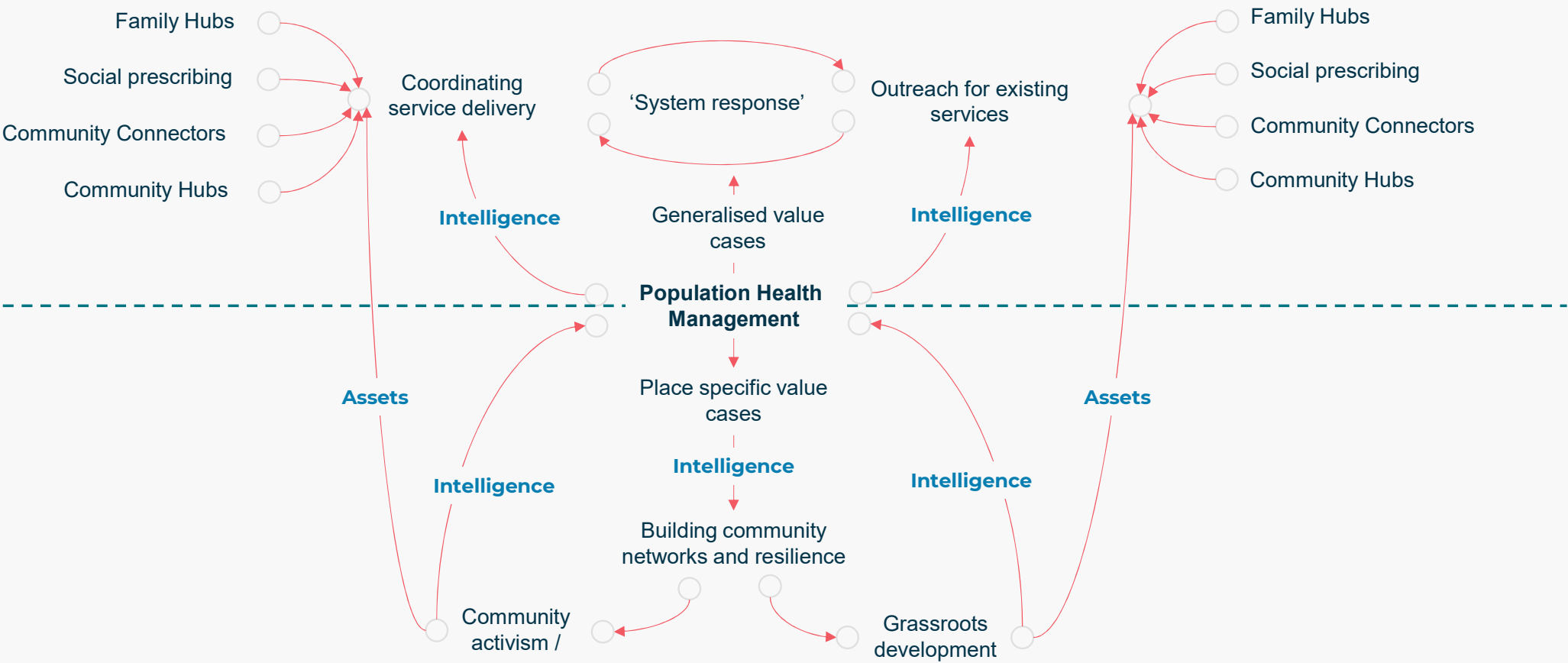
We currently work with councils and partners, delivering solutions across all people-based services, underpinned by our OneView infrastructure.

Local and benefits

We help local authorities to collect the most debt while making the least impact on society



Place - context



Population Health Management

Population Health Management

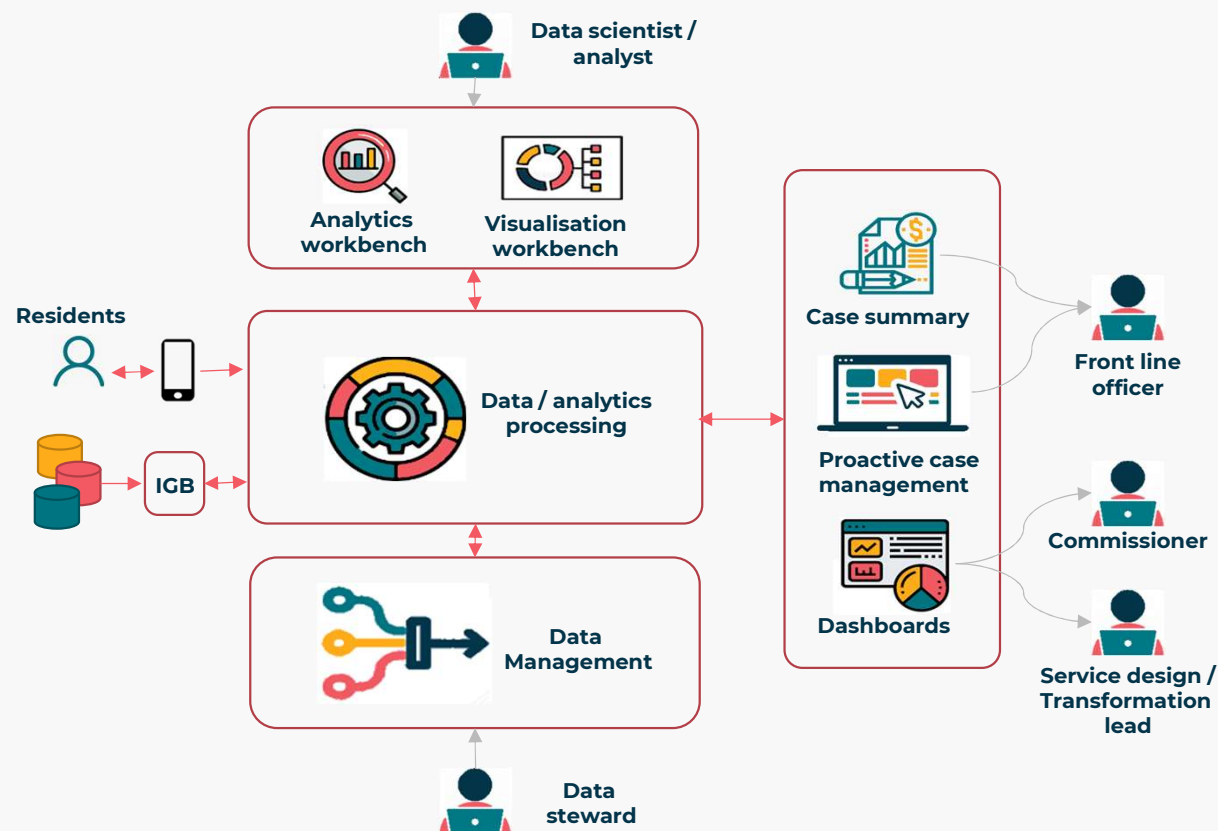


Population Health Management focuses on the wider determinants of health – which have a significant impact as only **20% of a person's health outcomes** are attributed to the ability to access good quality health care – **and the crucial role of communities and local people.**

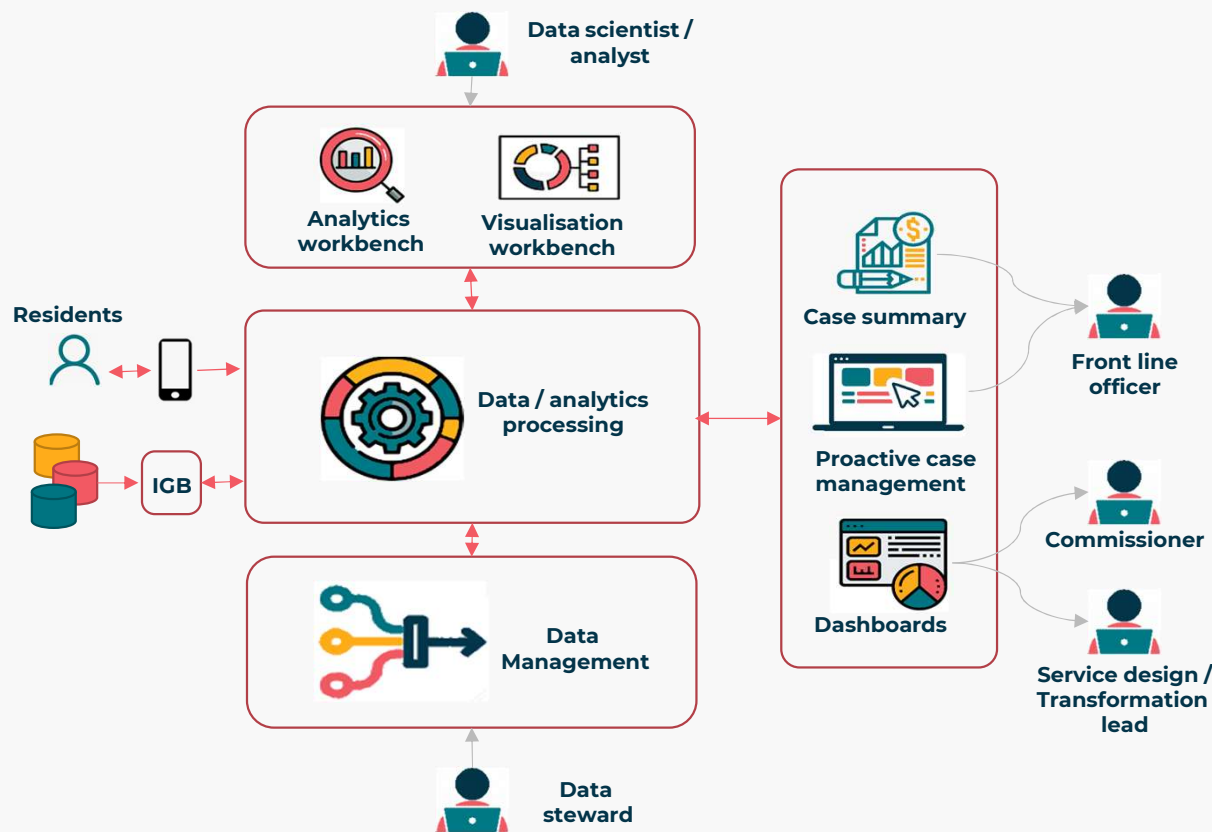


PHM uses historical and current data to understand what factors are driving **poor outcomes in different population groups.**

NHS England



Example – Unplanned Admission / falls prevention project



Falls prevention – Value case



Predictive model enabling the proactive identification of people aged > 65 that are at risk of fall in the next 9 months



Model considers risk factors across social, environmental as well as health, (recognising PHM guidance)



The resulting holistic view of risks to support targeting of the widest possible of interventions, across statutory and non statutory services - **with a particular focus on community assets.**

Geographical analysis – ward level analysis, key findings

Unplanned admission / falls risk varies considerably by ward: from 26 per 10k of the population (Thames Ward) to 87 per 10k of the population (Heath Ward)



Significant variation in risk prevalence, support needs across wards. Table shows wards with highest prevalence for each risk category.



Driving significant variation in engagement prior to residential placement. Table shows wards with highest take up for each intervention type (prior to Residential placement).

Top 3 wards for unplanned admission risk / falls risk

Risk of unplanned admissions
Eastbrook
Heath
Village

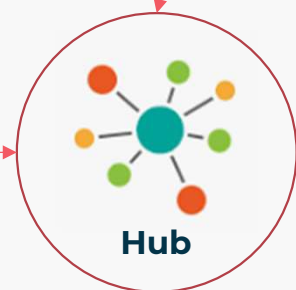
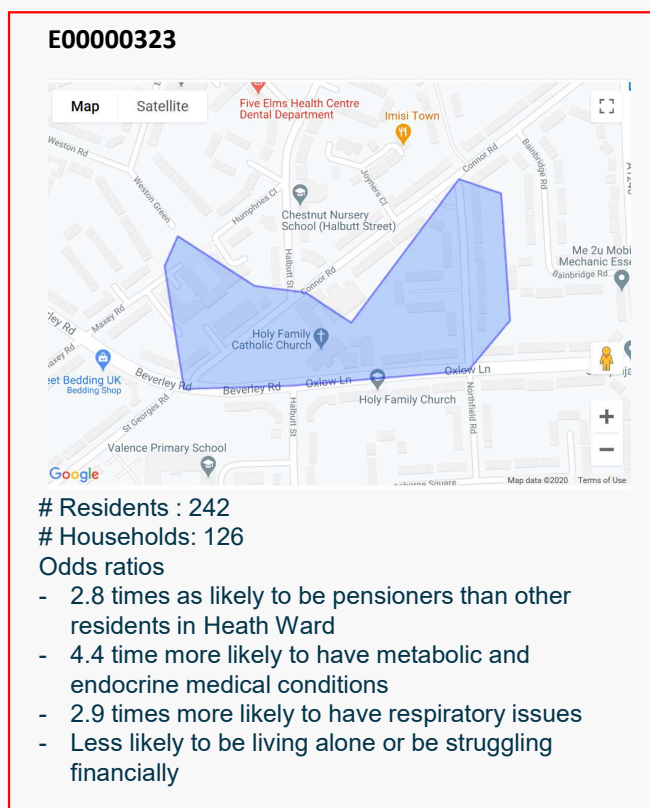
Top 3 wards for each high level risk category

Pensioners on benefits living alone:	Struggling with debt:	Struggling with disabilities:	Physical health (medical conditions)	Support needs
Valence	Abbey	Valence	Heath	Becontree
Alibon	Village	Heath	Eastbrook	Eastbrook
Heath	Heath	Mayesbrook	Chadwell Heath	Heath

Top 3 wards for each intervention type - take-up prior to residential care

Crisis Intervention	Day Care	Direct Payment	Extra Care	Home Care	Mental Health Support	Nursing	Personal Care Support	Memory and Cognition
Whalebone	Heath	Goresbrook	Longbridge	Thames	Parsloes	Whalebone	Valence	Longbridge
Valence	Village	Parsloes	Heath	Mayesbrook	Becontree	Eastbury	Heath	Heath
Village	Whalebone	Abbey	River	Alibon	Alibon	Eastbrook	Estabrook	Valence

Geographical analysis – Heath Ward, OA level analysis



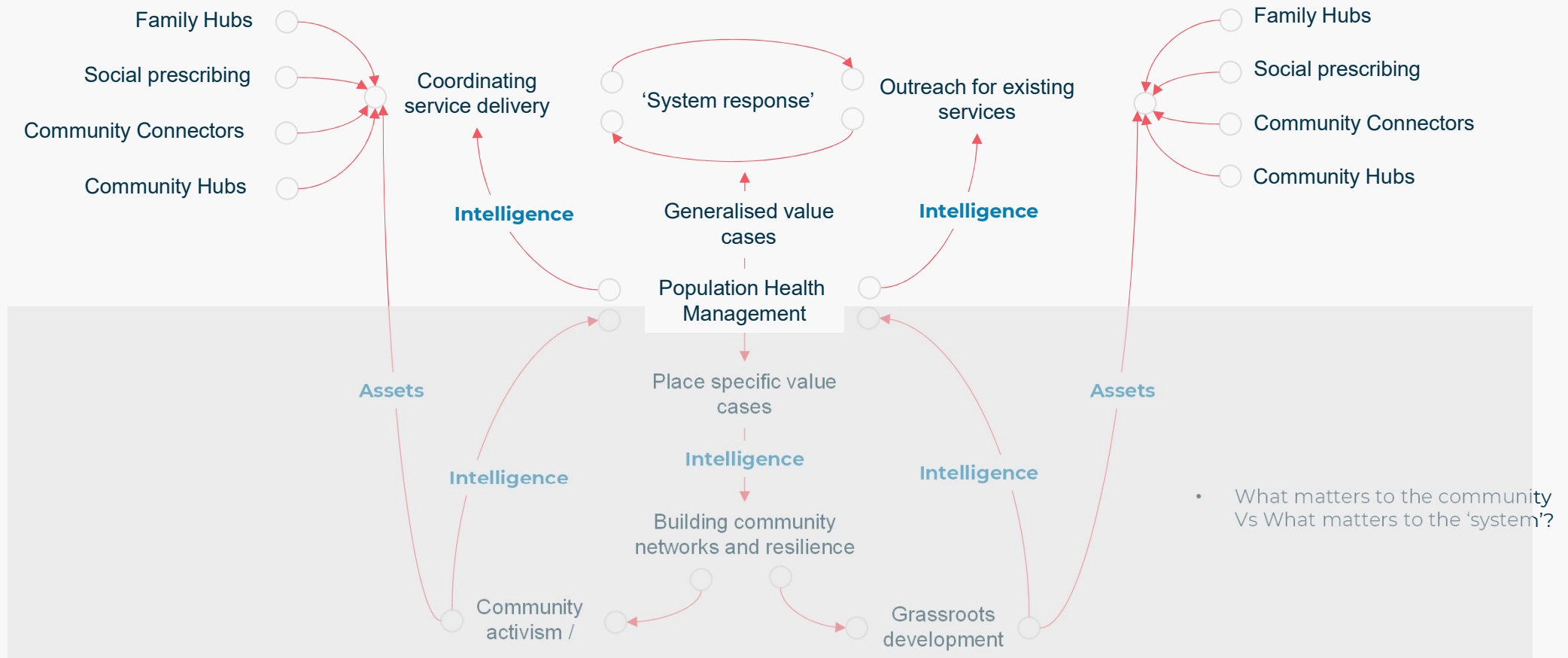
Community assets

Social care

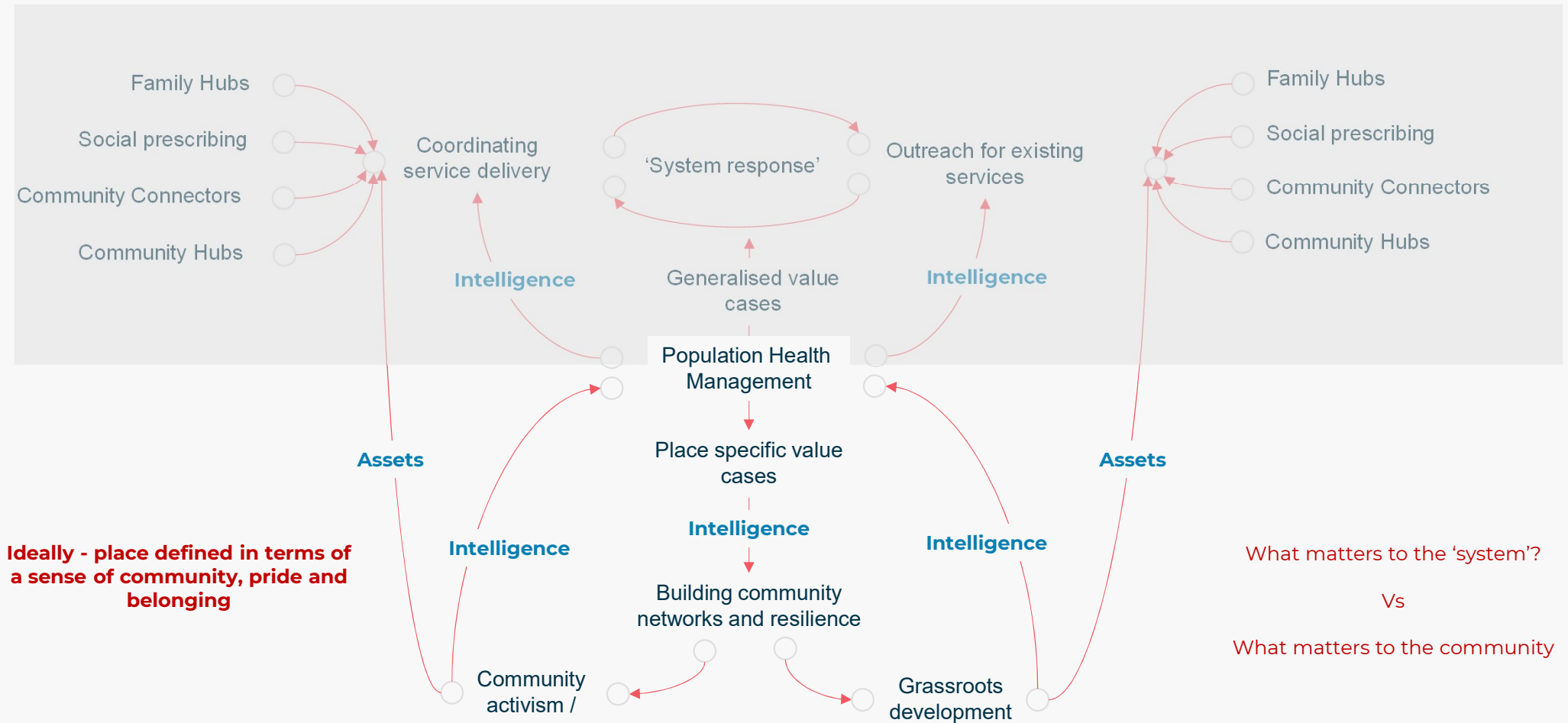
Health

Place – context

- **Target problem focussed**
- **Place defined in geo-spatial terms**



Place – context



Place shaping – the community voice

