

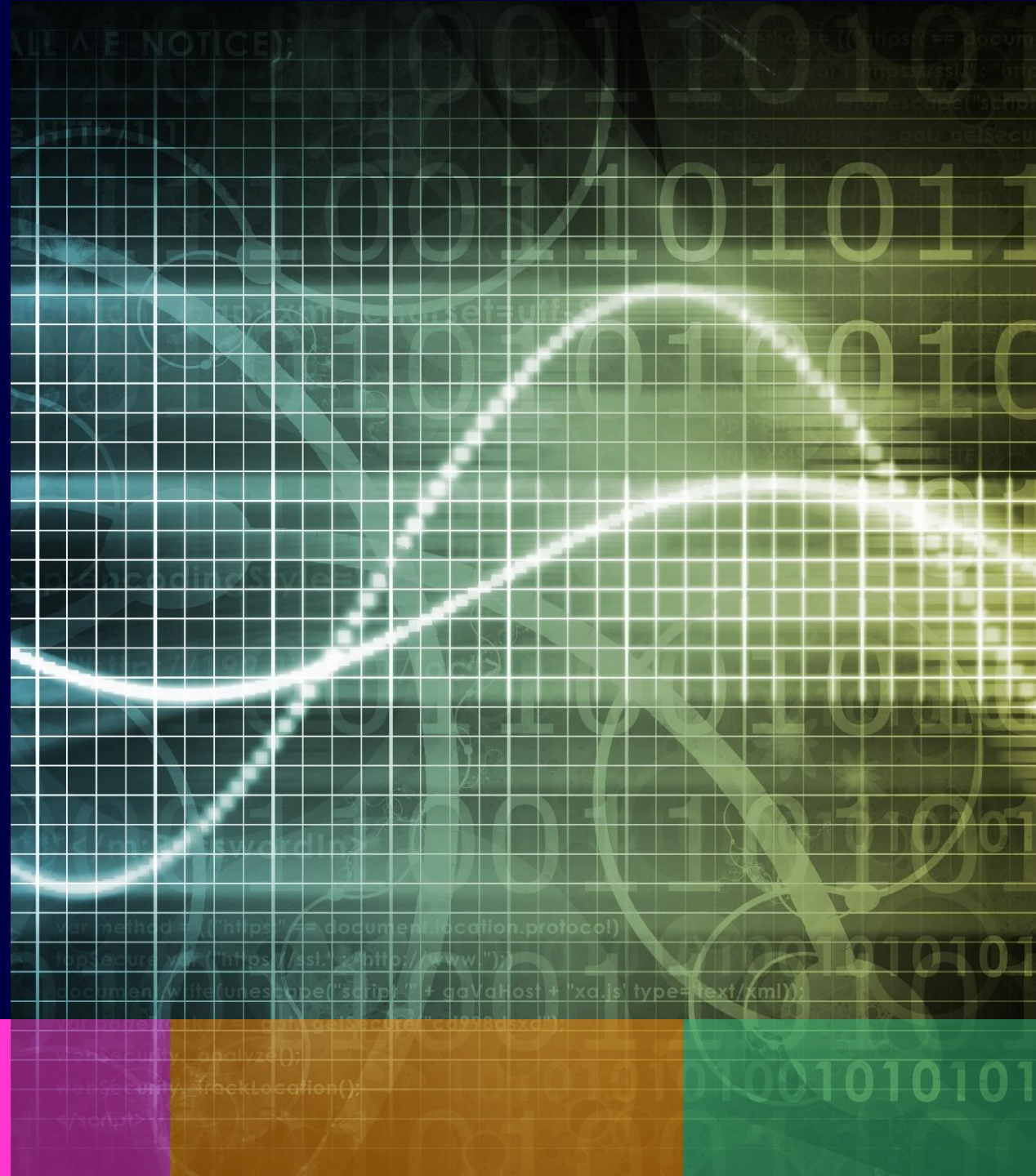


Spectrum regulation in the UK and within the international landscape

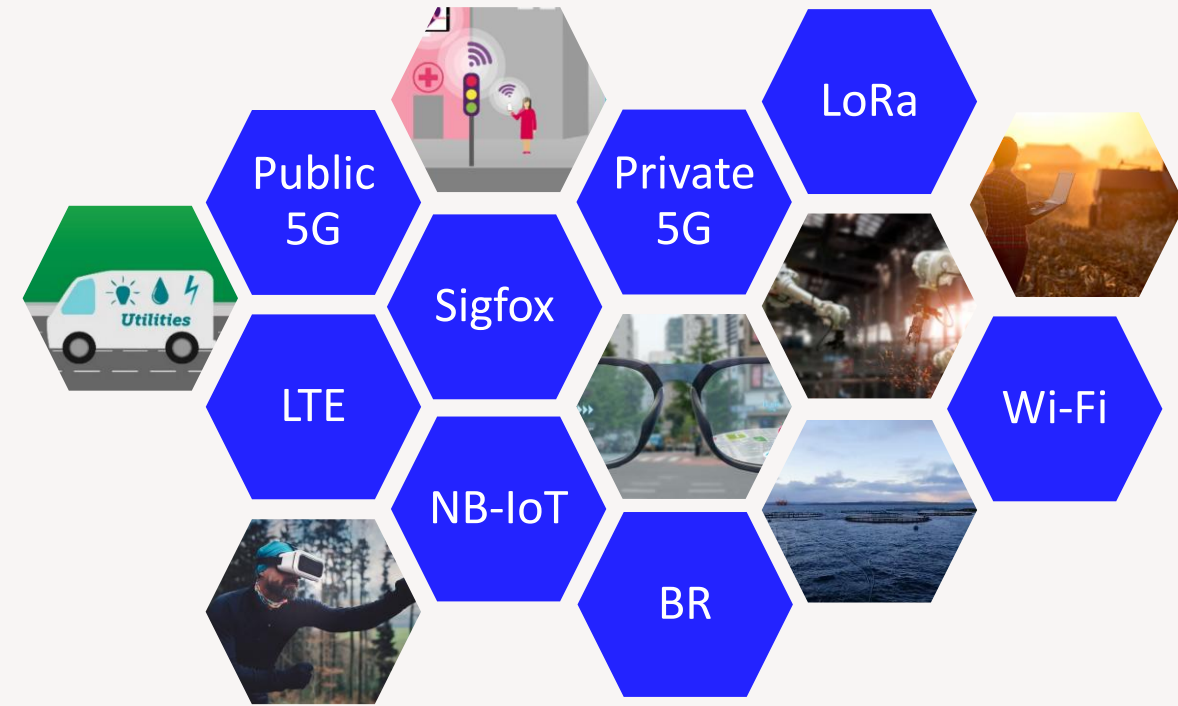
Chris Woolford

Director, International Spectrum Policy

May 2025



Different users and use cases want different technologies...



In the UK, spectrum frameworks are enabling different types of networks to serve different user needs

Spectrum sharing underpins initiatives to support wireless broadband growth in the UK

Shared Access for Local Networks

- Launched in UK in 2019, rules updated in 2024

6 GHz for Mobile and Wi-Fi

- Sharing and a phased approach to release

mmWave for National and Local Mobile

- Assignments via auction in urban areas

Framework to support Satellite Connectivity

- Future frameworks that are fit for purpose

Selected agenda items for WRC-27

- Agenda Item 1.7 (spectrum bands for IMT) is already taking up considerable time in international discussions
 - Finding globally harmonised solutions may be challenging

Region 1	Region 2	Region 3
4 400-4 800 MHz		4 400-4 800 MHz
7 125-7 250 MHz 7 750-8 400 MHz	7 125-8 400 MHz	7 125-8 400 MHz
14.8-15.35 GHz	14.8-15.35 GHz	14.8-15.35 GHz

- Satellite related issues make up a significant chunk of the WRC-27 agenda
 - High profile issues including unauthorised use (1.5), equitable access (1.6) and direct-to-device (1.13)
 - Other items addressing satellite use in particular bands and the rules for the notification and co-ordination of satellite networks
- Other substantive satellite issues – in particular EPFD – being addressed in ITU Study Group 4
- And various other important issues will be discussed at WRC-27

Some concluding observations

- UK may have opportunities to move quickly.... but we need to consider carefully how and when it may be beneficial to align with others
- At an international level, calls for global harmonisation remain strong.... but achieving consensus is becoming ever more difficult
- More and more countries are actively engaging in international spectrum discussions.... new alliances are emerging and spheres of influence are shifting
- Recent WRCs have become increasingly politicised.... and in the current geo-political environment this seems unlikely to get any easier
- Aspects of the international spectrum frameworks are being increasingly tested.... satellites are a particular case in point



Thank you

Chris Woolford

Director of International Spectrum Policy

Chris.woolford@ofcom.org.uk

www.ofcom.org.uk